

# Rendlesham



**LOOK WHO'S BACK  
IN TOWN THIS EASTER  
SID HAS ARRIVED  
GREASED LIGHTNING  
AT BCWM**



**Rendlesham Magazine advertising rates**

Size	1 month	3 months	6 months	12 months
Eighth Page – Landscape <i>63.75mm deep x 93mm wide</i>	£15.60	£39.00	£62.40	£93.60
Quarter Page – Portrait <i>132.5mm deep x 93mm wide</i>	£27.60	£68.88	£110.40	£165.60
Half Page – Landscape <i>132.5mm deep x 190mm wide</i>	£51.00	£127.50	£204.00	£306.00
Half Page – Portrait <i>270mm deep x 93mm wide</i>	£51.00	£127.50	£204.00	£306.00
Full Page – To Type Area <i>277mm deep x 190mm wide</i>	£94.20	£235.50	£376.80	£564.00
Col Inside Front Cover <i>132.5mm deep x 190mm wide</i>	– By Negotiation – Adverts in this space need to be booked under a 12-month volume discount agreement			
Col Back Cover <i>132.5mm deep x 190mm wide with 5mm bleed all round</i>	– By Negotiation – Adverts in this space need to be booked under a 12-month volume discount agreement			

**Magazine Contacts****Editor**

Parish Clerk:  
Heather Heelis

T: 01394 420207

E: clerk@rendleshampc.org.uk

**Artwork & Advertising**

Projects Officer:  
Sarah-Jane Quick

T: 01394 420207

E: projects@rendleshampc.org.uk

**May Deadline –  
Mon 10th April**

**Send your submissions to  
projects@rendleshampc.org.uk**

Rendlesham Magazine is available online and in hard copy format.

File format information for advertising is available at:  
**www.rendleshampc.org.uk/magazine**



Dear Rendlesham Homeowner

With unrivalled market knowledge our clients achieve the very best market prices, if you are thinking of selling and would like a free market appraisal on your home call us now on 01394 470590

regards

Shane Marks



Marks & Mann Estate Agent  
7 The Square,  
Martlesham Heath,  
Ipswich, IP5 3SL

01394 470590

shane@marksandmann.co.uk



**FREE EPC  
(Where required)**



We will give £100 to FORS on every house we sell on completion

Could you help deliver the  
**Rendlesham Magazine?**



**Rounds where we'd love some help**  
Outer Rendlesham, Rendlesham Mews  
plus occasional cover for holidays

Contact the  
Parish Council on  
**01394 420207**

2ND SUNDAY OF THE MONTH



**Community Litter Pick**

The family that picks together  
sticks together!

Next Pick  
**16 Apr**

We ♥ Rendlesham

ANY RUBBISH BIN WILL DO


**BAG THAT POO!**

**FREE DOG BAGS**  
from Rendlesham PC



**Collect from the Parish Council office**  
Mondays, Tuesdays & Thursdays, 10-2pm

KEEP BRITAIN TIDY



**RENDLESHAM YOOF GROUP**

**SENIORS**  
Years 7, 8  
Tues, 6.45-9.15pm

**JUNIORS**  
Year 9+  
Thurs, 6.45-9.15pm

**2023 Term Dates**  
4 Jan to 10 Feb | 21 Feb to 31 Mar  
17 Apr to 25 May | 5 Jun to 21 Jul  
**PD Days:** 20 Feb | 26 May

# Rendlesham

MAGAZINE



## THIS MONTH...

Parish Council News.....	4-5
Rendlesham Events for 2023.....	7
Local Business Focus: Wooden Roots.....	9
1st Rendlesham Scouts .....	10
Bentwaters Cold War Museum.....	11
Rendlesham Primary School.....	13
Coast & Vale Youth Ranger opportunities .....	14
Sudbourne Hall Cricket Club needs new members .....	15
The Vicar's Voice .....	16
Church Services .....	17
Sudoku.....	19
Woodbridge Library.....	21
What's on in Woodbridge.....	22
What's on in Suffolk.....	24
Rendlesham Revealed .....	25
Deben Community Farm .....	26-27
Rendlesham Radio.....	29
Diary Dates.....	30
Useful Information.....	31

*Views expressed in the Rendlesham Parish Magazine are not necessarily those of the Parish Council or of other contributing groups. The publication of content in the Rendlesham Parish Magazine is at the sole discretion of the Parish Council. The Rendlesham Parish Magazine does not endorse the accuracy or reliability of any article or advertising within this publication.*



# Parish Council News

## *SID has arrived*



### PLUS... Play Area repairs and the Annual Parish Meeting



**Meet SID**, short for Speed Indicator Device. SID's job is to monitor the speed of vehicles in the village, providing valuable data as well as acting as a traffic calming measure.

SID has two locations in the village, one in Acer Road and one in Redwald Road. These locations were approved by Suffolk County Council and SID will move between the two sites.

We thank all those people who drive safely in the village and we will keep everyone posted on the data collected.

#### Repairs to Jubilee Park play equipment

Repairs to the swings will be taking place (date to be confirmed) after our RoSPA inspection identified structural weakness in the

timber posts. To ensure the safety of children the Parish Council have had to remove the swings until the work has taken place and apologise for any inconvenience.

One of the matters for the new Parish Council following the elections in May will be a review of the equipment in the Jubilee Park play area.

#### Annual Parish Meeting

This will be on Thursday 25 May at 7pm in the Community Centre. The meeting receives reports from the Chairman of the Parish Council, District and County Councillors and provides an opportunity for residents in the village to raise and discuss any matters. Everyone is welcome to attend and refreshments will be available.

**THE NEXT MEETING OF THE  
PARISH COUNCIL WILL BE ON  
MON 15TH MAY 2023 AT THE  
COMMUNITY CENTRE, 7.30PM**

#### Community Copy Shop at the Parish Office

Copying	B/W	Colour
A4	10p	20p
A3	20p	35p
A4 card	10p	20p
Binding		
A4 plastic/wire spiral, with cover and back		£2.50
A4 no cover/back		£1.50
A3 no cover/back		£1.50
Laminating		
A4		35p
A3		70p

**Could you help deliver the  
Rendlesham  
Magazine?**



**Rounds where we'd love some help**

Redwald Road, Outer Rendlesham, plus  
some occasional cover for holidays

Contact the Parish Council  
on **01394 420207** or via  
**projects@rendleshampc.org.uk**



# Stay Safe



## Safe Online Shopping

When buying online, just how confident are you that you're dealing with a genuine seller and not a criminal? Or do you even think about it?

Many people believe that online shopping scams are easy to spot, with poor spelling or grammar, dodgy logos or unusual website or email addresses or phone numbers. However, this is now rarely the case, with scammers going to great lengths to earn your trust before cheating you out of your money. It's upsetting at the best of times, but even worse when money's tight. Whether you're buying a car, clothes, or gifts online, help to safeguard yourself and your money by watching *Get Safe Online's* latest short

video and reading on to discover some top tips: [www.getsafeonline.org/onlinebuying/](http://www.getsafeonline.org/onlinebuying/)

**UK Finance** is also warning us to stay alert for suspicious automated phone calls pretending to be from their bank or card company. With this scam, customers receive an automated call saying that a suspicious transaction has occurred on their account and needs to be verified. The customer is prompted to press a number on their phone to go through to a supposed 'agent', who is actually a criminal.

**Remember**, the banks and the police will never contact you asking for your online banking password or for you to transfer money to a new account for fraud reasons.

**\* REMEMBER TO**  
1- Register to vote  
2- Check my photo ID  
3- Vote at a polling station!

No ID? You can apply for free voter ID  
Find out more at  
[electoralcommission.org.uk/voterID](http://electoralcommission.org.uk/voterID)  
or call 0800 328 0280



Sad to report that we're going nowhere fast with *Suffolk County Council* regarding the **Rendlesham Oak** (corner of Sycamore Drive and Acer Road) but we're keeping at it... Hopefully we'll be able to report something soon!

## Your current Parish Councillors

### Mike Stevenson: Chair

Ex-officio on all Committees  
Personnel Committee  
Youth Group Charity  
Community Centre Charity  
SALC Rep

### Victoria Proctor:

#### Vice Chair

Planning Committee  
Personnel Committee  
Youth Group Charity  
Jubilee Park Committee  
Community Centre Charity

### James Carter

Finance & Asset Committee  
Planning Committee  
Personnel Committee  
Youth Group Charity  
Jubilee Park Committee  
Green Print Forum  
SALC Rep

### Dave Moore

Finance & Asset Committee  
Personnel Committee  
Jubilee Park Committee

### Mark Stones

Planning Committee  
Jubilee Park Committee  
Community Centre Charity

### Martyn Redfern

Planning Committee  
Finance & Asset Committee

### Mike Parry

Finance & Asset Committee  
Planning Committee  
Jubilee Park Committee  
Community Centre Charity  
SNT Representative

## VACANCIES

## COMMUNITY SPEEDWATCH CO-ORDINATOR

Help manage our local Speedwatch initiative, in association with Suffolk Police.

Contact the Clerk at [clerk@rendleshampc.org.uk](mailto:clerk@rendleshampc.org.uk)

## FIND OUT WHAT WE'RE DOING FOR YOU

Minutes of Past Meetings are available on the Parish Council website at

[www.rendlesham.suffolk.gov.uk](http://www.rendlesham.suffolk.gov.uk)

## OFFICE HOURS

Monday,  
Tuesday & Thursday,  
10am-2pm

By contacting Rendlesham Parish Council you agree your contact details may be held and processed for the purpose of correspondence and the services we provide.

*We only keep information for as long as necessary. We do not share your information with third parties.*



# Chris Mann

PAINTER & PAPER HANGER

For a free quote, please ring

**01728 687438**

**07941 262663**

27 years experience



## MICK JOHNS GARAGE SERVICES



**For all your Caravan, Motorhome  
& Campervan Maintenance,  
Servicing & Safety Requirements  
- Including Habitation Checks**

**MOBILE ENGINEER**



Member Mobile Caravan Engineers Association

See our website for full list of services and pricing

**[www.mickjohnsgarageservices.co.uk](http://www.mickjohnsgarageservices.co.uk)**

**Call: 01394 822016 Mob: 07799 117 998**

## Bentwaters Heating & Plumbing

**All Plumbing & Heating installation and  
maintenance work undertaken**

**All Boiler Servicing, Repairs & Installation  
(Oil, Gas & LPG)**

**Power Flushing**

**Landlord Safety Checks**

**Gas Safe**  
REGISTER



Gas Safe & OFTEC Registered

**Rm 6, Building 5, Bentwaters Parks, Rendlesham IP12 2TW**

**01394 421381 | 07437 713747**

**[alex@bentwatersheating.com](mailto:alex@bentwatersheating.com)**



## SWANN'S NURSERY

A FAMILY RUN BUSINESS  
ESTABLISHED OVER 40 YEARS

***Eyke Road, Bromeswell, Woodbridge, IP12 2PN***

**01394 460127 | [info@swannsnursery.co.uk](mailto:info@swannsnursery.co.uk)**

**For all your gardening needs –  
shrubs, trees, conifers, hedging  
& fruit trees**

ALSO

***The Wild Blackberry Cafe***

**Visit us on the A1152 between Eyke & Bromeswell**



**LOCAL FAMILY-RUN GARAGE  
PROUDLY TRADING OVER 40 YEARS**



# Stephen Caulfield & Son Ltd

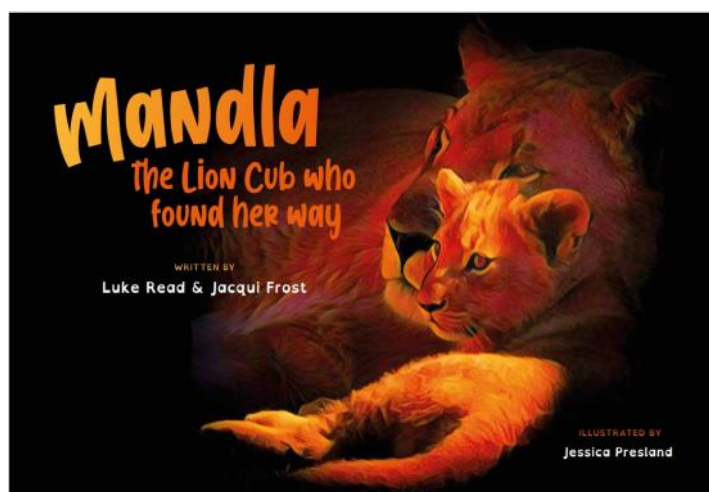
**01728 688462 | [info@caulfieldsgarage.com](mailto:info@caulfieldsgarage.com)**

**THE GARAGE, ASHE ROAD (B1078)  
TUNSTALL, IP12 2JB**

**Vehicle Servicing & Repairs, MOT, New Exhausts, Tyres,  
Petrol, Calorgas, Coal, Logs, Kindling, Paraffin**



# Easter Egg-citement in Jubilee Park



## COMMUNITY EASTER EGG HUNT (12-4.30pm)

Make sure you hop along to Jubilee Park on Thursday 6th April for our first event of the year, an egg-citing Community Easter Event!

### What to EGG-pect:

**12:00** Gates Open, Face Painting, Local Farmers Market, Garden Games, Food & Hot Drinks

**12:30** Book reading from Jacqui Frost with her new book "Mandla the Lion Cub who found her way" (co-written by Luke Read and illustrated by Jessica Presland).

**12:45** "Mandla The Lion Cub" Scavenger Hunt opens. Scavenge around Jubilee Park by collecting clues on the day, then come to the yellow RPC tent to claim your Chocolate Egg.

**13:00** Chocolate Eggs (Sponsored by Costcutter) can be collected from the Yellow Parish Council tent.

### Don't go Eggs-Directory! REGISTER TO AVOID DISAPPOINTMENT

PLEASE REGISTER for your child/ren's egg(s) by Tuesday 4th April via [events@rendleshampc.org.uk](mailto:events@rendleshampc.org.uk) – please include:

- (1) The responsible adults surname (adult who will be collecting on the day)
- (2) Number of children in household under 10.
- (3) Address and Dietary requirements, if applicable.

*NB: Visitors from surrounding villages are very welcome to attend this FREE event but please note that Chocolate Easter Eggs are only available for Rendlesham residents and children that attend Rendlesham Primary School.*

## 14:00 Bonnet Competition

There is no need to register. Just bring your home-made Easter Bonnet along on the day for your chance to win an additional tasty treat.

## 16:30 Event Finishes

### WHO'LL BE THERE?

Special Guest appearance from Rendlesham's very own Easter Bunny and...

Lucy Campbell – Snazzy Boat Face facepainting (Rendlesham Parish Council will be covering the cost so you don't have too!)

Rendlesham's Community Coffee Shop – Hot Crossed Buns & Hot Chocolate for the kiddies or a Tea or Coffee for the rest.

Gourmet Grill Masters – BBQ kings Joe and Gav serving up mouth-watering burgers with a gourmet twist.

## THE RENDLESHAM SHOW – "A RURAL ADVENTURE"

In June, we'll be celebrating all things to do with living in the Suffolk countryside.

Here's a quick heads up!

- Friday 9th June 5pm-9pm  
Fun Fair, Food, Live Music & Bar
- Saturday 10th June 11am-8.30pm  
Stalls, Food, Fun Fair, Entertainment, Dog Show, Tractors, Cars & fun for the whole family!

For further details visit our Show website at: [www.rendleshamshow.co.uk](http://www.rendleshamshow.co.uk)

The website and show-specific social media pages will be updated continuously to keep you in the know.

## And what can you look forward to for the rest of the year?

### Coronation

We are not hosting an Event for the Coronation, but if you have a Royal Roustabout you'd like to promote, get in touch...

### Rendo Fest at Jubilee Park

Saturday 19th August  
2pm-10.30pm

An afternoon of music, bar, food and chilled summer vibes...

### Fireworks Night at Jubilee Park

Friday 3rd November  
4.30pm-7.30pm

### Xmas Light Switch on, Grotto & Xmas Market in the Village Square

Sunday 3rd December  
3pm-7pm

### Santa's Grand Tour of Rendlesham

Sunday 17th December  
4pm-8pm

## Raffle Tickets & Show Programmes

Raffle tickets will make their way to your homes in the May edition of the *Rendlesham Magazine*.

And bursting with information, your Show Programme will be delivered with your June copy of the *Magazine*.

**Ellie Hutchinson**  
Events Co-ordinator  
[events@rendleshampc.org.uk](mailto:events@rendleshampc.org.uk)



**We Need Your Help...**

Do you have 2.5 hours to spare a week?  
Would you like to volunteer in our Community Coffee Shop?

If your answer is YES  
Please get in touch either by popping into The Pavilion at Jubilee Park Thursday - Saturday 9am-2pm  
call 07918175879

*Rendlesham*  
Community Coffee Shop

In Partnership with Rendlesham Good Neighbourhood Scheme

**WOODEN ROOTS WEDNESDAYS**

Running from May 24th - June 28th

**Drumming Workshops**

**FREE!!**  
Anyone aged 8 +

**@ Rendlesham Community Centre**

**4:30pm - 5:30PM**

Join Marcus Brown and the Wooden Roots team for FREE WEEKLY CLASSES learning Traditional West African Drumming. Come along and see why drumming is so important for your mental health and well-being and have some fun. No experience needed!

 **WOODEN ROOTS**  
West African Drumming & Percussion

[WWW.WOODENROOTS.COM](http://WWW.WOODENROOTS.COM)

 **ARTS COUNCIL ENGLAND**  
Supported using public funding by

LOTTERY FINANCED

*Meekness* & **MAJESTY**



Join with us as we consider the **One** who Easter revolves around

Good Friday - 7th April - 10.30am  
Easter Sunday - 9th April - 10.30am  
Rendlesham Primary School

 **GRACE CHURCH**  
RENDLESHAM

[gracerendlesham.org](http://gracerendlesham.org)



# Going back to my Roots (yeah!)

After a successful time living and working in California, **Gemma & Marcus Brown** (and mum Anne, of *Anne's Art Quilts*) all returned to the UK in 2018 to make Suffolk their new home.

Now after several years of hard work (and a pandemic), they've rebuilt their business in the heart of Rendlesham.

From their 2000 sq ft base on Bentwaters, they work tirelessly to get their West African drums (which they are all so passionate about) in front of a wider audience.

*Wooden Roots HQ* plays host to adult drumming classes, and is where Marcus presides over his state-of-the-art workshop where their world famous drum building and repair service takes place.

## Drumming in the Community!

The Wooden Roots "Levels Up" grants programme is funded by the *Arts Council of England*. It promotes music and movement to offer a culturally enriched education for young people and families.

It's a new programme that builds on the work they started in 2021 with *Power of Stories*, an award winning exhibition of costumes from the *Marvel Studios' Black Panther Movie*.

Were you wondering what the connection was with Marvel costumes coming to Ipswich? Well, Marcus built some of the drums for the *Marvel Black Panther movie* and some were used on the music score by his Grammy award-winning teacher Magatte Sow — who still lives in Los Angeles and has performed at the Royal Albert Hall in London.



BACK: Anne (L) & Gemma (R)  
FRONT: Marcus

Wooden Roots diligently supports all the creative networks around them — and it's this kind of vision and dedication which left the *Arts Council* truly delighted to support them, because Wooden Roots' outreach work is such an asset to Suffolk's cultural landscape.

## FREE Drumming Classes for anyone Aged 8+ — from Weds 24th May at the Community Centre

Wooden Roots want local young people to have greater access to drumming classes.

So *Rendlesham Community Centre* was the ideal venue since it's somewhere they can get to easily without relying on a family member.

The six-week programme at *Rendlesham Community Centre*

runs from 24 May to 28 June, is for ages 8+ and is FREE!

Gemma says: "our hope is to get children from Eyke and Rendlesham schools as well as family members coming along to give it a go and find out what we're all about!"

## Snape Maltings

This August, Wooden Roots will host the *Wooden Experience Event* at *Snape Maltings* where they will take over two of the buildings for a weekend of drumming workshops taught by world class artists.

One such artist is 16-year old music virtuoso Nasira Keita (daughter of Mamady Keita who brought djembe to the West and is one of the main reasons we are all playing today). Nasira will teach anyone over the age of 8. She knows over 60 rhythms

and is teaching some of them with us. The other teachers will hold Adult workshops (from Beginners to Advanced) — so get in quick as people are already booking up from all over the UK and Europe!

That this is happening in such a renowned international venue highlights the world's continuing shift towards inclusivity and diversity.

And the *Wooden Experience* will further erode the idea that Snape is an elitist, "not for us" experience.

This is something close to both Gemma and Marcus' hearts and Gemma says: "*Britten Pears Arts* is an amazing partner to work with, helping to break down cultural barriers through music".

## Fancy giving it a go?

Drumming is so uplifting and is proven to release endorphins and promote so many health benefits.

We all live in challenging times so an outlet such as drumming is a "timeout" from life. You focus on a beautiful rhythm alongside others who might also be looking for a timeout...

Whatever the reason, drumming in a group is a powerful experience not to be missed — so let's get connected and join Wooden Roots in your community!

**WOODEN ROOTS is at:**  
136 Bentwaters Parks,  
Rendlesham, IP12 2TW

Contact Gemma for more information about all their classes and workshops

**07846 761145**  
[www.woodenroots.com](http://www.woodenroots.com)

# 1st Rendlesham Scout Group



## Exciting times ahead!

Since 1st Rendlesham Scout Group started over 10 years ago, many young people in Rendlesham and our local areas have learnt *#SkillsforLife*.

As well as these skills they have had a chance to participate in many activities that scouting offers – from archery and air rifle shooting to tomahawk throwing and canoeing (and many others).

The main issue the group has always had is the lack of our own scout building and surrounding land to hold these activities on.

We are hoping this will all change, and a massive **THANK YOU** must go to local man James Rudge.

James approached the scout group just over a year ago as he had acquired the land opposite the Water Tower, (where the *Community Food Garden* is and where the “man” shed project will go) and wanted to know if we wished to use part of the land for scouting.

As the leaders met James and spoke to him, the sceptics among us wanted to know what the catch was! There was none. James had been in scouting himself and his wife is involved in scouting, and he recognised the benefits scouting brings to young people and wanted to help the local group out.

For a year now the Scouts and Swarm Explorers have

been using this land for a range of activities from campfires and cooking to pioneering and it has become a home for us. The fantastic news is that recently we have signed a lease agreement with James to have a temporary structure put in place on the land for the next five years.

The current plan is to have several shipping containers in a U-shape with a canvas across the top to give a covered meeting space. The top layer of soil will be skimmed off and hardcore put down and the soil would be used to create a back stop for an archery, tomahawk and air rifle range.

Of course, long term we hope to have a more

permanent structure, but this will take time and a lot of fundraising and money from different sources, but without this land and the fantastic offer from James the dream of 1st Rendlesham ever having their own scout hut would have remained just that, a dream.

The group would also like to thank *Deben District* scouts and district commissioner **Gary Burden** in his support for the project – and to our Swarm Explorer leader **Clare Barstow** who has done a magnificent job of liaising with the district and James and keeping her fellow leaders in the loop.

**Warwick Atkinson**  
Cubs Leader

## Who's up for City Nature Challenge 2023?

**The City Nature Challenge** started in 2016 as a bit of friendly rivalry between Los Angeles and San Francisco to see who could make the most wildlife observations in a short period.

In 2022 more than 41,000 people took part across the world, with over 815,000 observations made and 32,000 species identified, including 1,300 rare species.

We talk about protecting biodiversity, but we need to measure it first so that we can get an idea of the species richness around us.

### Pop the date in your Diary

A great chance to measure local biodiversity is coming up from **Friday 28th April** to **Monday 1st May 2023**.

Collecting your observations is easy, simply download the **iNaturalist** app from **www.inaturalist.org**

Use this app to take photos or record wildlife sounds. Then see if the app itself or other users can identify the species. If several users agree an identification, it is classified ‘research grade’ and researchers may use it in scientific studies.

### So join the CNC!

You don't have to be a scientist to join. The CNC is for anyone interested in finding out more about the plants, animals and fungi around them.

If you've ever wondered about the name of a plant, bird or a lichen as you walk

around your neighbourhood, this project is for you. You can spend 5 mins joining in or the whole four days in the wonders of nature.

### Be a part of 2023 City Nature Challenge

- **Download iNaturalist** to your phone or tablet and set up an account.
- **Go to “Projects”** and search for *City Nature Challenge 2023: Suffolk, UK* (please note, this link is not active until 28th April).
- **Go outside** in your garden, or any green space, like a park or churchyard.
- **Click “Observe”** and take a photo or two of a plant, animal or fungus. GPS coordinates save the location. A few different



angles are best. But please, no cultivated plants or domestic animals.

- **Click “What did you see?”** to help identify your observation, then save it.
- **Upload** your finds when you have Wi-Fi access.
- Wait for other users to start identifying your species.

It's a great way to expand your knowledge, connect with the natural world and like-minded people.

So, let's learn more about our local biodiversity!

For further info, contact **Wendy Herniman** at **woodbridgecitizenscience@gmail.com**



# Bentwaters Cold War Museum



*The Bentwaters Aviation Society* was formed back in 2003 when a group of enthusiasts gathered at the base and started work on what was to become the *Bentwaters Cold War Museum*.

Led by Graham Haynes (Rendlesham resident) the original members were given permission by *Bentwaters Parks* to convert the *United States Air Force Command Post* into a museum to tell the history of RAF Bentwaters and RAF Woodbridge.

Four years later the work was completed, the museum opened and the first visitors arrived. Fast forward to 2023, there are now some 50 staff and the museum now includes aircraft exhibits.

The Society remains in place as the charity that funds and supports the museum with over 250 members across the world from Suffolk to the US.

All the staff are volunteers with varied interests – from aviation buffs to those who like history and have fond memories of the base. We even have pilots who help out with our live Jaguar jet!

The society offers membership which includes monthly meetings at the museum with presentations

from researchers, veterans, pilots, or anything to do with aviation or the base. Along with the society newsletter with news and stories about the base's history. Members get free admission to open days at the museum; discounts for the café and shop and the new restoration hangar tour. It's a great way to get closer to the museum.

## New minibus for 2023

BCWM will run a minibus twice a day on certain open days from the museum to the hangar — online bookings secure your place on the bus. The restoration team will show you the aircraft, give some background on them and explain the work being carried out. On show will be the *Lightning*, *T-33*, *Meteor* and the *Jaguar* (the only fully working one in the UK).

## Visit our deluxe diner or hang out in the hangar!

Come along and visit our new café diner, check out the museum in the *Command Post* and take a trip to the hangar for a great day out!

The museum is open on the first and third Sundays of each month until the end of October and Bank Holiday Sunday or Mondays, 10-4pm.

It's a great place for local families to come and visit and enjoy your local tourist attraction ... and kids come FREE too!

Check out the website for more details. Book your tickets online, or just drop in. Either way, we'll be glad to see you.

**Simon Gladas**  
Bentwaters Aviation Society  
[www.bcwm.org.uk](http://www.bcwm.org.uk)



The A-10 gets a spring clean!  
A volunteer undertakes the original "JET" wash



Tackling the troublesome, very heavy hangar doors for the Hardened Aircraft Shelters which need frequent maintenance. There are around 40 on the base.



Hangar-bout, have you seen a LIGHTNING jet up close and personal yet?



The business end of the LIGHTNING, the first British jet to fly at twice the speed of sound!



Images: BCWM






**BESPOKE DOG DAY CARE AND HOLIDAYS BASED IN  
RENDLESHAM AND EYKE**

-  **Suffolk's Longest Running 5 Star Doggy Day Care**
-  **Puppy Socialisation, Games & Parties**
-  **Overnight Hotel with Beds, Underfloor Heating and Air Conditioning**
-  **Woodland Walks Available in Private Enclosed Land Everyday**
-  **Grooms, Baths & Nails with a Highly Qualified Groomer**

Enquiries: 0330 056 2222 - [www.happidayscentre.co.uk](http://www.happidayscentre.co.uk)



**Animals of the Earth**  
*Animal & Human healing therapist*

Does your animal need help with feeling better?

- Holistic approach
- Health maintenance
- Trauma release packages
- Animal self-medication (Zoopharmacognosy)
- Human therapies also available

*"Nurturing our animal's body, mind and soul  
Animals and guardians healing together"*

[www.animalsoftheearth.me](http://www.animalsoftheearth.me)  
Esmé Bonnett MHAO 07909 694607

# Rendlesham

## PROPERTY MARKET UPDATE

Home sellers are testing the market with slightly higher prices this year.

While prices did go up in January, they're still lower than October's peak. It's a good sign for buyers looking for familiar trends in a stable market.

Sellers who priced their homes correctly will likely benefit from buyer activity, but those who overpriced may struggle as more homes hit the market. It's important for sellers to listen to their estate agent's advice and price their home correctly from the start to avoid having to lower the price later.



Curious to see how this is affecting the equity in your home? Scan the QR code to get an instant estimate!

*Tim Giles*

Office: 01394 330 664  
Mobile: 07977 218 786  
[tim.giles@theagencyuk.com](mailto:tim.giles@theagencyuk.com)

**Helping you move home ...**





# Rendlesham Primary School

## *World Book Day*



### Bookish worms burrowing deep!

This March, the children and staff had a wonderful day celebrating *World Book Day*.

They enjoyed dressing up in their favourite book character costumes and sharing stories throughout the day.

It was the perfect chance for children to work collaboratively in their classrooms and to decorate

the doors, and as you can see they did an amazing job!

We had storytelling and drama in the morning — which the children all revelled in!

But in the afternoon, there was time for “shared” reading — which meant the older children got to mix up and share books with the younger children.



*Reading is brain food – so who’s a “Top Banana” then?*



*And who likes his history books then? Henry VIII (his Wives not so much!)*



*Reading is hungry work. What’s she got for Lunch? Haven’t a Scooby...*



*SPACE, the final frontier before boldly beading out for playtime!*



*Reading, so there’s always something to do on “The Day the Crayons Quit”*



*Reading stirs the imaginations and “The Magic Porridge Pot”*



*Older children read what had been their favourite books to the younger children*



*Peas in a Pod? Super Heroines? Or are the Spice Girls having another reunion?*



# Lone Rangers?

## FREE opportunities for young people to get involved with nature

Young people in Suffolk and Essex aged between 13-18 are encouraged to take part in hands-on conservation work as part of a popular volunteering scheme.

The *Coast & Vale Youth Rangers* is a free volunteer group for young people aged 13-18 who are interested in gaining hands-on skills and experience in conservation and environmental work.

Organised by the *Dedham Vale* and *Coast & Heaths Areas of Outstanding Natural Beauty* team, sessions usually take place outdoors on the first Sunday morning of each month at various green spaces on the Suffolk and Essex border.

Activities include practical conservation work, wildlife surveys, beach cleans, community tasks, bushcraft and outdoor pursuits with tasks taking place in a range of locations such as Flatford, Dedham, Mistley, Assington and Wrabness.

**Emma Black**, AONB Countryside Projects Officer said: "Becoming a *Coast & Vale Youth Ranger* is a great way to get free, practical experience in conservation and environmental work.

"It's a fantastic opportunity to meet new friends, build confidence and gain valuable skills for the workplace under the supervision of trained experts".



Photography: Gregg Brown

No experience is needed, just lots of enthusiasm and a willingness to get stuck in and have some fun!

All training and equipment provided. Rangers can either meet at the activity location or book a lift in the AONB minibus from Ipswich.

### For more information

Contact EMMA BLACK on: [emma.black@suffolk.gov.uk](mailto:emma.black@suffolk.gov.uk)

And you can find out more about *Coast & Vale Youth Rangers* at: [suffolkcoastandheaths.org](http://suffolkcoastandheaths.org)

**We're here if you need help**

love every drop  
anglianwater

**We have lots of ways to help you and your loved ones.**



If you're finding it difficult to pay, we offer:

Discounted tariffs

Assistance schemes

Affordable payment plans

Our **Priority Services Register** can help lots of different people with free practical support, such as:

Letting you know about upcoming work in your area and help if your water goes off

Helping protect you against bogus callers, which includes setting a password for your account

Sending bills in different formats and communicating with you in your preferred language

Find out more

[anglianwater.co.uk/watercare](http://anglianwater.co.uk/watercare)

0800 011 3774

BSL [anglianwater.co.uk/bsl](http://anglianwater.co.uk/bsl)



Scan here

**We're here to help**

Whatever the problem, we're here for free, impartial and confidential advice



**Call us on 0808 278 7866**

Lines are open 10am to 2 pm Monday to Friday

or email us from our website [caes.org.uk](http://caes.org.uk)

**citizens advice East Suffolk**

Our offices are in :  
Beccles • Felixstowe • Leiston • Lowestoft  
plus outreach centres across the region



# We don't like cricket, we love it!

## Sudbourne Hall Cricket Club is looking for members... and some AllStar Dynamos!

As we clear ice from our windscreens, its hard to believe the cricket season will soon be underway!

*Sudbourne Hall Cricket Club* opens up its league campaign in mid April and as a club it is keen to become more involved in the community.

SHCC has a fantastic pitch set in the grounds of Sudbourne Hall, halfway between Sudbourne and Orford. With a sprinkling of local willing volunteers who are keen to move the Club forward this year, they are all set for season 2023.

### Come and have a go!

SHCC has a couple of additions to its batting average this year. The Club



is running *Allstars & Dynamo Cricket* for youngsters in the area. These will probably be held on Saturday mornings at the Club. (Full logistics will be confirmed shortly.)

### Turn up, have fun!

SHCC is also keen to run T20 evenings this summer,

to cater for all abilities. It's active and social. Simply turn up, have fun! (And after ball hits willow, we all hit the refreshments table...)

Finally, we're keen to recruit players for our Saturday league team, men and women. Again, there'll be



Photography: Nick Eddery-Joel

more information as we approach the start of the season.

We hope to see you then!

**Andy Halliday**

SHCC Secretary

[andyhalliday1@me.com](mailto:andyhalliday1@me.com)

## REMOVALS

With a selection of different sized vehicles, no removal is too large or small for our team of experienced removal experts

## STORAGE

Your goods will be securely stored in purpose built wooden storage containers within our warehouse, with a full inventory provided

## SHIPPING

We maybe a local family run removal firm, but we do not stay local. Let us arrange your move whether it be in the UK, Europe or Worldwide



*Pooley Removals*  
and Storage

Building 3B, Bentwaters Parks, Rendlesham,  
Woodbridge, Suffolk IP12 2TW

**Telephone 01394 460498**

[www.pooleyremovals.com](http://www.pooleyremovals.com) – [info@pooleyremovals.com](mailto:info@pooleyremovals.com)

# The Vicar's Voice

April begins with the celebration of *Palm Sunday*, when we remember Jesus entering into Jerusalem on a donkey, with people waving palm branches and crying out "Hosanna to the King of Kings". There is a sense of jubilation and celebration as Jesus is welcomed into the city of cities.

But what a week it turns into! As the week unfolds, we see Jesus on entering the Temple to pray, the place where God's presence was known to dwell, filled with money lenders and merchants bartering, all out to make a profit at the expense of others.

Outraged, Jesus loses his temper and overturns the tables at the lack of respect for His Father's house.

Jesus also takes some time out with much loved friends, Lazarus, and his sisters Mary and Martha. It is during this visit that Mary pours expensive, perfumed oil on the feet of Jesus and wipes them with her hair.

Later in the week, Jesus and his disciples meet together to celebrate the feast of *Passover*, remembering when the Hebrews were led out from slavery in Egypt, wandering through the desert for 40 years before entering into the promised land. (Before this meal, Jesus shocks his friends by becoming servant-like and washes their feet.)

It is during this meal, the last that all the disciples would spend with Jesus, that Jesus asks us to remember him through the breaking of bread. Jesus also tells Judas to go and do what he has to.

After the meal ended, Jesus, along with Peter, James and John, go to the *Garden of Gethsemane*, where Jesus takes time out to pray. This, for me, is the most poignant and significant part of the week leading up to *Good Friday*, when we see the human vulnerability of Jesus as he prays to His Father to "let him off the hook", knowing

that he has to go through with what is to come.

*Good Friday* brings the culmination of all that Jesus has worked towards, his sacrifice once and for all for the sins of all people. We go from the jubilant cries of *Hosanna to Crucify*. What a difference a week makes!

*Good Friday* brings an unconditional sacrifice of love that transcends all understanding. An unconditional sacrifice of love given for you and me.

Then, *Easter Day* dawns with an empty tomb, folded grave clothes and a risen Christ Jesus, the victory of life over death, joy over sorrow, love over anger and hate.

*Easter Day* begins with joyous cries of "*Alleluia. He is Risen. He is Risen indeed. Alleluia!*" – cries that resound at every sunrise service, and in every church.

These cries speak of promise and hope for all of us when

faced with times of difficulty, anxiety and uncertainty.

Certainly, what with the cost of living crisis and increasingly more people needing to use foodbanks, natural disasters such as the earthquakes experienced by Turkey and Syria, and the man-made horrors of war and conflict as suffered by Ukraine and all places of oppression, we seem to be in times of great difficulty and anxiety.

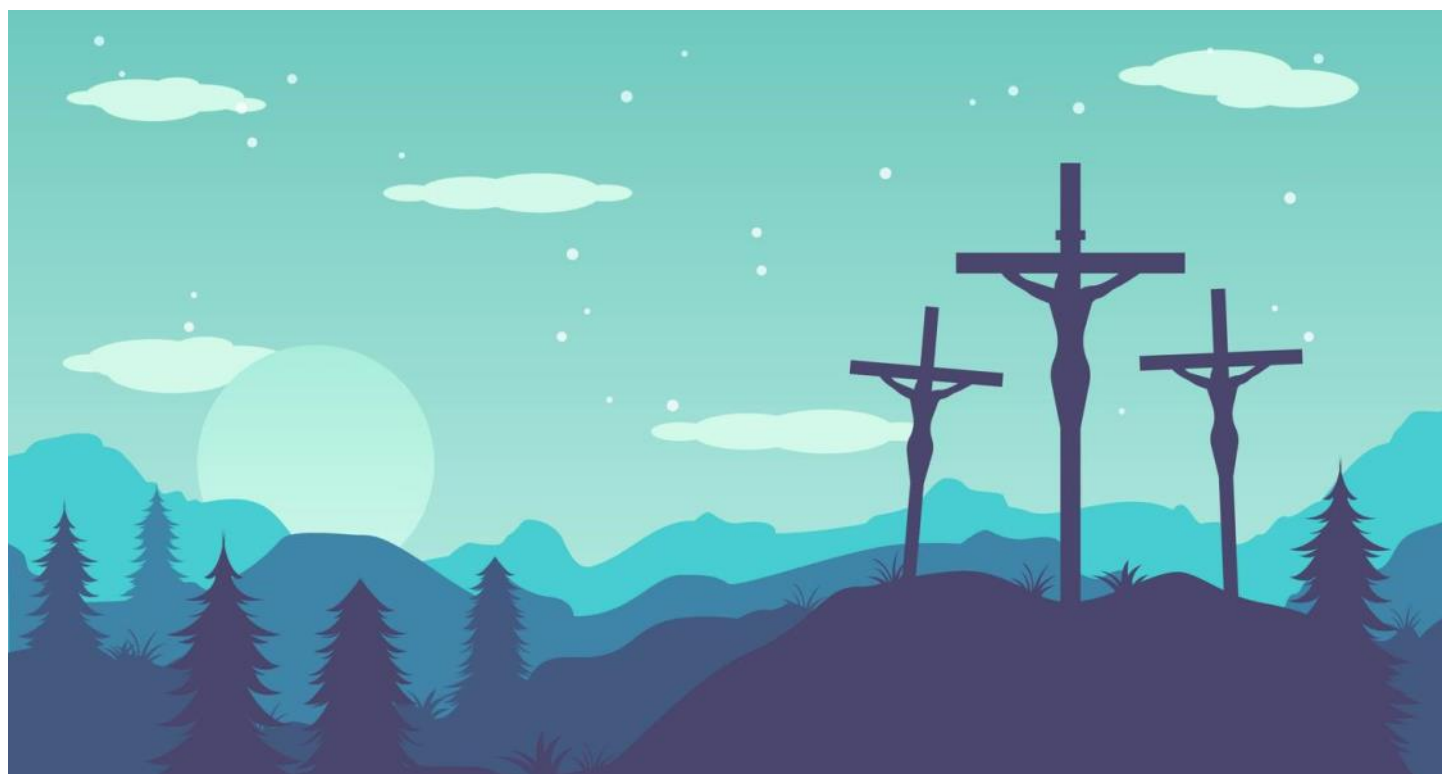
But let us remember that through the Easter promise, there is always the promise of a new and exciting future, full of hope and better times to come.

*And Love, most of all, the promise of love for all...*

May this Easter bring you, and all those you love, hope and the promise of fulfilling times ahead.

With my love and Easter blessings,

*Rev Mandy*  
xx





# Church Services

Date	Time	Place	Service	Officiant
Sunday 2nd April PALM SUNDAY	9.30am	All Saints, Eyke	Holy Communion	Rev Mandy
Wednesday 5th April	10am	St Felix	Holy Communion	Rev Mandy
Thursday 6th April MAUNDY THURSDAY	7pm	St Felix	Holy Communion with Foot Washing Vigil til Midnight	Rev Mandy
Friday 7th April GOOD FRIDAY	12 noon 2.30pm	All Saints, Eyke St Felix	Stations of the Cross Prayers for the Passion of Christ	Stephen Nicolls Rev Mandy
Saturday 8th April EASTER EVE	6pm	All Saints, Eyke	Lighting of Easter Candles and renewal of Baptism Vows	Rev Mandy
Sunday 9th April EASTER DAY	9.30am 9.30am 11am	St Gregory Bromeswell St Felix	Easter Communion Easter Communion with Easter Egg Hunt Easter Communion with Easter Egg Hunt	Rev Mandy Rev Kevan Rev Mandy
Sunday 16th April EASTER 2	9.30am 9.30am 11.00am	Bromeswell All Saints, Eyke St Felix	Holy Communion Morning Prayer Prayer & Praise	Rev Kevan Rev Mandy Greg Gooch
Sunday 23rd April EASTER 3	9.30am 11.00am 11.00am	St Gregory Bromeswell St Felix	Morning Prayer Holy Communion Holy Communion	Stephen N Rev Mandy Rev Kevan
Sunday 30th April EASTER 4	10.30am	St Felix	Café Church	Charlotte & "DJ"



## Information

### Baptisms, marriages, funerals & pastoral needs:

Rev Mandy Reynolds

01394 420129

revmandy.rendlesham@

yahoo.com

### General enquiries:

info@rendleshamchurch.org

## St Gregory the Great

Ashe Road

Rendlesham

Woodbridge

IP12 2QY

### Church Wardens:

Liz Morrison 01394 460582

Caroline Bunbury 01394

460235

## St Felix of Dunwich

Walnut Tree Avenue

Rendlesham

Woodbridge

IP12 2GG

### Church Wardens:

Nigel Harding 01394 420419

Matthew Reynolds 07716

728608





**J Andrews**  
**Painter  
 &  
 Decorator**  
 07923 690145  
 jandrewsdecorator@yahoo.com

## Glenn Knights Electrical Services

Domestic, Industrial &  
Commercial Installations  
and Maintenance

07903 708502

Based in Rendlesham, Suffolk



## LookupStayup

WELLBEING SUPPORT FOR EVERYONE

Are you feeling overwhelmed and unhappy?  
Consumed by anxiety and worry?  
Lack of focus and direction? Worried about  
your child? Relationship issues?  
Facing family problems...?

### NLP Transformational Life Coaching can help!

My purpose and passion is for helping and  
empowering adults, teenagers, children, and  
organisations to transform their lives — with  
a focus on improving their wellbeing through  
their mind, body and community.

Get in touch to book your first 30 minute  
discovery call for FREE!

[www.lookupstayup.com](http://www.lookupstayup.com)



☎ 07927 780286

## Tina Scott – Mobile Hairdressing

Visiting you at Home for a Professional Service

Ladies or Gents Cuts	£14.00
Children's Cuts	£10.00
Cut & Blowdry/Set	£26.00
Blowdry	£15.00
Perms	£52.00
Colours	from £42.00

Call for availability  
and more prices

**01394 420039**

## Stuart Daniels Fitness

07478 030 531 [stuart@sdmovfit.co.uk](mailto:stuart@sdmovfit.co.uk)

\*\*\*

## Kickboxing Fitness

Classes & Personal Training

All Fitness Levels Welcome

**Bromeswell Village Hall**

Woodbridge, IP12 2PY

Tuesdays 7:30pm - 8:30pm

Thursdays 8:00pm - 9:00pm

[www.sdmovfit.co.uk](http://www.sdmovfit.co.uk)

📱 [kickboxfitclasses](#)



## P. J. Johnson

Qualified Painter & Decorator

Over 25 years experience

Interior & Exterior Painting

Wallpaper Hanging

Coving ~ Tiling ~ Carpentry

*References supplied*

*Highly recommended*

Tel: 01394 420972 Mobile: 07977 732344

E-mail: [pjdecorating98@gmail.com](mailto:pjdecorating98@gmail.com)

**Chloe Kinrade**  
 SCHOOL of DANCE  
 RENDLESHAM • WICKHAM MARKET • ALDEBURGH  
 SMILE \* SPARKLE \* SHINE

Contact Miss Chloe to book your FREE TRIAL

Take part in ISTD Examinations, Shows,  
Summer Performances, Holiday Dance &  
Craft Workshops

**07940 469026**  
[chloekinradeschoolofdance@gmail.com](mailto:chloekinradeschoolofdance@gmail.com)  
 📱 [chloekinradeschoolofdance](#)

FIRST CLASS IS FREE

## ELECTRICIAN

Inspections–Fault Finding–Installation

House extensions or refurbishment work undertaken.

Garden offices/cabins/workshops—supplies and circuits.

Exterior lighting or power for water features, etc.

Extra sockets, lighting circuits or cooker points installed.

Upgraded and replacement fuse boards supplied.

Showers and storage heaters fitted.

Quality assured and professional service.

**T W Electrical Services**

Telephone 01394 421702

Mobile 07773 247905

24 hour call out available





# Sudoku Challenge

8	9		1					
			4	2		1	6	
4		1						
			9			3		
1			8		5			7
		3			7			
						5		6
	4	5		7	2			
					8		7	2

In a SUDOKU, you fill in the grid so that every row, column and 3 x 3 box contains the digits 1 to 9. No maths, just solve it with reason and logic.

A Sudoku starts with a partially filled grid that you must solve following the rules above. Complete the grid, and you've solved the Sudoku.

Depending on your skill and experience, a Sudoku typically takes 10 to 30 minutes to solve.

This month it's a **DIFFICULT** grid to keep you puzzling longer — well, you do have the whole of Easter Weekend to tackle it.

Good luck!

*Answers on Page 31*

RENDLESHAM  
DOG WALKING  
GROUPS & SOLO

with *Eva & friends*



CALL SARAH FOR DETAILS 07738 974985

Professionally  
trained, fully insured,  
friendly service

  
JD Tree Services  
& COUNTRYSIDE MANAGEMENT LTD

- Tree removal, felling or reduction • Site clearance
- Hedge cutting • Stump grinding
- Chipping • Waste removal

Call today for a free no obligation quote

tel: 01379 671285 or 07736 311782

email: info@jdtrees.co.uk web: jdtrees.co.uk

Checkatrade

City & Guilds  
NPTC  
Qualified

## Dapstar incl. Rendlesham MOT & Service Centre

### MOT Testing (Class 4 & 7)

- **20+ years combined experience with a variety of Vehicles**
- **Servicing, Diagnostics, Repairs and Maintenance of all Vehicles**
- **Tyres & Exhausts**
- **Specialists in Traffic, Vivaro, Primastar customisation**
- **FREE COURTESY CAR**
- **Collection & Drop-Off Service**

**DAPSTAR ENGINEERING LTD**

Base Business Park, Unit F6  
Rendlesham, Suffolk, IP12 2TZ

enquiries@dapstar.email

**01394 420322**



**ADVERTISE YOUR  
LOCAL BUSINESS  
TO OVER 1,500  
LOCAL HOMES!**



If you would like to advertise in the Rendlesham Parish Magazine, ring **01394 420207** or email: **projects@rendleshampc.org.uk**



**Auctions**

**Clarke & Simpson**

*Always open...*



**Can't make it?**  
All auctions are available for online bidding via [the-saleroom.com](http://the-saleroom.com) or [i-bidder.com](http://i-bidder.com)

**Valuation**  
Probate & other valuations  
Call-in service 6 days a week

**Special sales**  
Antiques & Fine Arts  
Art Deco & Retro  
Domestic & Rural Bygones  
Agricultural Collective

**General Monday sale**  
Bespoke sales  
In 2020 our lots sold to 60 countries and registered buyers from over 70  
Acting as agents for household clearances

**Clarke & Simpson Auction Centre**  
Campsea Ashe, Nr Wickham Market, Suffolk IP13 0PS T: 01728 746323  
[www.clarkeandsimpson.co.uk](http://www.clarkeandsimpson.co.uk) CAndSAuctions @candsauctions

**Need a great local venue?  
Look no further...**



**Rendlesham**  
COMMUNITY CENTRE

**TO DISCUSS YOUR REQUIREMENTS**  
Call the Parish Council on  
**01394 420207** or email us at  
[admin@rendleshampc.org.uk](mailto:admin@rendleshampc.org.uk)

**RATED**  
★★★★★  
ON GOOGLE  
REVIEWS

**REPORT YOUR CHANGES**



**EASTSUFFOLK COUNCIL**

**Are you claiming Housing Benefit and/or Council Tax Support?**

Have you or someone in your household had a change of circumstances?

You can report your changes over the phone, or online. It's quick and easy. Tell us now:

- If someone has moved in/out of your home
- A change of employer
- An increase in hours worked
- A change to childcare payments
- An increase in private pension
- An increase in savings

Report your changes by phone on 0333 016 2000 or online at [www.angliarevenues.gov.uk](http://www.angliarevenues.gov.uk)

**orp**  
Anglia Revenues Partnership

**MELTON**  
MOWERS LTD

LAWNMOWER  
& GARDEN  
MACHINERY



**SALES | REPAIRS | SPARES | HIRE**  
2 Peartree Cottages, Station Road,  
Melton, Woodbridge, Suffolk, IP12 1PY  
**01394 382983**  
[www.meltonmowers.co.uk](http://www.meltonmowers.co.uk)

# What's on at Woodbridge Library?

## SUFFOLK LIBRARIES

**Woodbridge Library**  
01394 330855

*New Street, Woodbridge*  
IP12 1DT

### Opening Hours

Mon: 10am - 4pm  
Tue: 9am - 7.30pm  
Wed: 9am - 5.30pm  
Thu: 9am - 5.30pm  
Fri: 9am - 7pm  
Sat: 9am - 5pm  
Sun: 10am - 4pm

*NB: The Library will be closed on Good Friday, Easter Sunday and Easter Monday*

### ARTLIB with DICK DOLAN

An exhibition of Dick Dolan's drawings and mixed media as inspired by the "Martlesham Wilds", recently bought by *Suffolk Wildlife Trust*. 50% of sales income being donated to SWT.

### MONDAYS

**Citizens Advice – Mondays**  
10am-12pm

### TUESDAYS

**Write Now Writing Group – Tues**  
11th April, 2pm-4pm

**Woodbridge Writers' Workshop – Tues**  
11th April, 5.15pm-7.15pm

### WEDNESDAYS

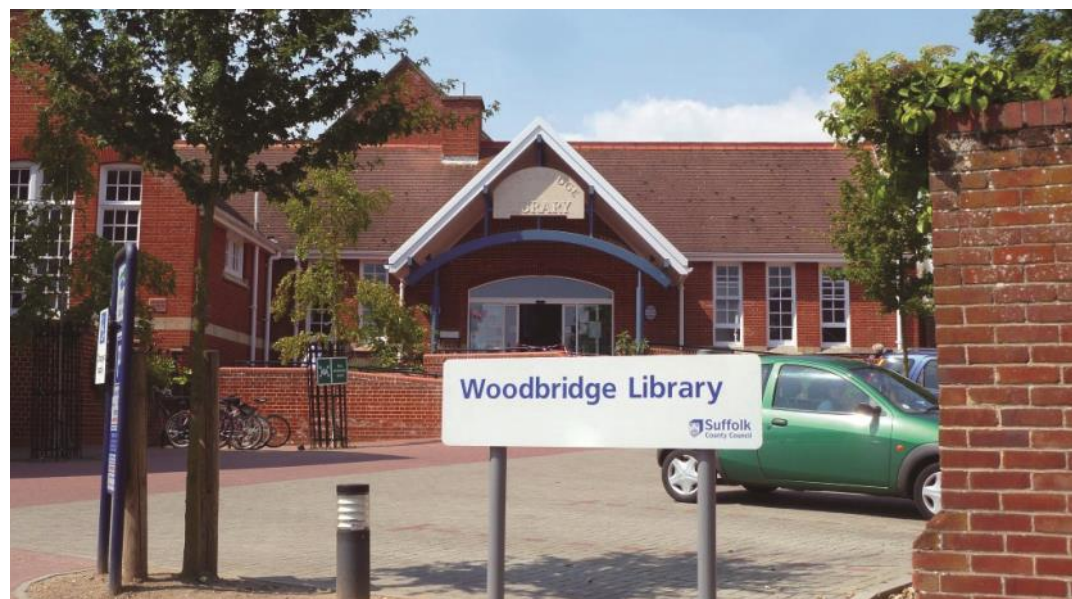
**Woodbridge Writers Group – Weds**  
5th & 19th April, 10am-12pm

**Open Space – Every Weds,**  
1.30pm-3.30pm

### THURSDAYS

**Toddle Talk – Every Thurs,**  
10am-11am

Signing classes for babies/toddlers and their carers



### Books, Banter & Biscuits' – Thurs 13th April, 2pm-4pm

Discussing *Where the Crawdads Sing* by Delia Owens

### U3A Reading Aloud – Thurs 20th April, 11.30am-1.30pm

Each member reads their choices aloud to the group. £3 per meeting.

### Top Time Play Reading – Thurs 20th April, 2pm-4.30pm

### FOWL Fashion Show – Thurs 20th April, 7pm

An evening of fashion and fizz. Tickets are £10 (which includes a glass of fizz) from the Library. Tickets must be bought in advance, in cash.

### Top Time Games Club – Thurs 27th April, 2pm-4pm

### FRIDAYS

**Knitting Group – Fridays,**  
2pm-4pm

### SATURDAYS

**Woodbridge Board Gamers – Sat 8th April, 1pm-5pm**

Come along to play strategy board games, all levels, all ages.

### FOR YOUNG FAMILIES

**WEDNESDAYS, 10.30-10.50AM**  
**Baby Bounce**

**WEDNESDAYS, 11.15-11.45AM**

**Tot Rock Rhyme & Rhythm**

**FRIDAYS, 9.30AM-10.15AM**

**Me, Myself and Baby (Stay & Play)**

**FRIDAYS, 10.30-11.00AM**

**Story Time**

### SUFFOLK LIBRARIES

Buy a Friends bookmark for £1 or "I'm a Borrower" tote bags for £3.50 – or for £5 get the tote bag and as much fiction as you can fit inside!

### BOOK & DVD SALE

Ex-stock books and DVDs.

Adult Fiction:

30p each or 4 for £1

Non-Fiction:

Individually Priced

Junior Literature:

20p each

DVDs:

50p each or 3 for £1

(Box Sets £1 each)

### ROOM HIRE & DISPLAY

Community/Charity/Private group hire – £12 per hour (min. booking of 2 hours)

Commercial or Statutory groups – £18 per hour (min. booking of 2 hours)

Display board – £10 per week

Staffed table display – £10 per half day



### FRIENDS OF WOODBRIDGE LIBRARY

If you're enthusiastic about libraries, would enjoy helping to organise Library events and are willing to help with our fundraising activities, please ask a member of staff for more details.

### LUNCH, A TALK & GOOD COMPANY

*The perfect way to spend a Lunchtime!*

FIRST MONDAY of the month at Woodbridge Golf Club.

For more information visit: [woodbridgeprobus.org.uk](http://woodbridgeprobus.org.uk)

Or call **Roger Brown** (Treasurer), 07881 627591



WOODBRIDGE  
PROBUS CLUB



# What's on in Woodbridge?

## Just what on Earth is "Earth Day"?

The first Earth Day was held in the USA on 22 April 1970 when a huge number of people, concerned about the damage being done to the environment – oil spills, air pollution, raw sewage in rivers, toxic dumps and more, came together to campaign for greater protection for the planet.

[www.earthday.org](http://www.earthday.org)

Earth Day is now a global event and sad to say, the original issues are still with us over 50 years later.

We still need to campaign for a cleaner environment and an urgent response is needed to the challenge of global

warming leading to sea level rise and climate change.

### Come to our Fair

On Saturday 22 April 2023 please join us in a *Celebration of Earth Day* in Whisstocks Place at our **Local Food and Environment Fair** 10am and 4pm.



[transitionwoodbridge.org.uk](http://transitionwoodbridge.org.uk)



local groups will be showing what they are doing to help improve, protect and raise awareness of our local environment – including from *Suffolk Wildlife Trust*, *RSPB*, *Save the Deben*, *Woodbridge Climate Action Centre* and others.

Transition Woodbridge will be there so please come and talk to us if you'd like to help improve our environment here in Woodbridge.

We are so fortunate to live in this lovely area but we can all help to protect it and make it even better.

## WOODBIDGE TIDE MILL MUSEUM®

### RE-OPENS

**Sat April 1 2023**

See our 'Plan Your Visit' page  
at [woodbridgetidemill.org.uk](http://woodbridgetidemill.org.uk)  
for wheel turning times

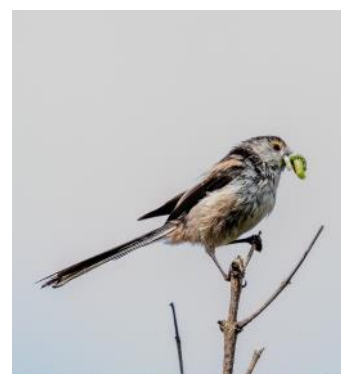
Woodbridge Tide Mill Museum, Tide Mill Way, Woodbridge Suffolk IP12 1BY

## First Print Competition of 2023 at Woodbridge Camera Club



A well contested competition with 31 images judged by Nigel Rea ARPS at Woodbridge's *Quay Church Hall*. The 'open subject' competition was fairly critiqued and well scored with eight prints being held back for comparison to decide the top scores.

The winning image was '*Early Birds Catching Worms*' by Barry Jones. Second place was awarded to John Pollard for '*Smokey Joe's*' and third to Steve Stammers for '*Long-tailed Tit*'. Sue Garrod's entry '*Spanish Serenade*' was selected by Nigel as runner up.



## Woodbridge Art Club Grand Designs

As I write this our potters are busy with an exciting Pottery Throw-Down Challenge! The brief is "Grand Designs" – to create an abode using clay.

You are warmly invited to visit the Club over the Easter Weekend (Friday 7th April – Monday 10th April, 10am till 5pm) when the work created in response to this brief will be exhibited.

More than that, we invite everyone visiting us to vote for their favourite piece over that weekend.

The "Grand Design" pieces are just a small part of what you can see in this FREE exhibition of paintings, pottery, cards, photography and bobbin lace-work.

All the work is by local artists and items are available to purchase and take away on the day. The sale of items in our exhibitions contribute to the ongoing life of our friendly club.

The Easter weekend is just the beginning of our open season – our exhibition will be open every weekend (and bank holidays) until early December.

Over this time the Display will be refreshed and changed so feel free to pop in whenever you are nearby – we love having visitors! Find us on Tide Mill Quay, close to the Tide Mill in Woodbridge.

To find out more about us, call in or contact us via Facebook or Instagram.

**Rosie Evans**



Who lives in a house like this? A pottery work in progress by Audrey Percy but we're assured it will be ready to move into by Easter weekend!



AROUND AND ABOUT ACROSS SUFFOLK

## Ipswich Transport Museum

Old Trolleybus Depot, Cobham Road, Ipswich, IP3 9JD

Amongst the best of its type in the whole UK, Ipswich Transport Museum is open for another season, every Sunday from 11am until 4pm until December 3rd.

**Opening hours in April**  
1pm-4pm – April 4th, 5th, 6th, 11th, 12th, 13th

**11am-4pm** – Good Friday, Easter Saturday and 29th

**Sunday 10th April** is our Easter themed day with quizzes and chocolate eggs for our younger visitors and FREE rides on our buses.

### What is there to see?

Well, we have about 100 major exhibits, almost all of which were manufactured

and/or operated in Ipswich – including lorries, fire engines, ambulances, electric vehicles, bicycles, and a wide selection of grass cutting machines and horse drawn vehicles.

Or climb aboard our Ipswich tram and several trolleybuses and motor buses.

We are also home to the *Ipswich Engineering Collection* which includes examples of *Ransoms Simms & Jeffries* agricultural implements and one of their combine harvesters. Also we have *Ransome & Rapier* cranes and excavators, *Compaire Reavell* air compressors, *Cranes* valves and *Turner* grain handling equipment.



Have a wander round our feature displays – we have a garage workshop, a motor cycle workshop and a cycle repair shop.

Also displayed on the walls are a large selection of enamelled signs.

And last, but never least, there is a well-stocked gift shop and the Sunbeam tea room.

[www.ipswichtransportmuseum.co.uk](http://www.ipswichtransportmuseum.co.uk)

## A Festival of Skulduggery in Stowmarket



**Friday 28th April, 7.30pm**

An evening with ex-boxer, barrister and thriller writer **Tony Kent** to talk about his book *No Way to Die ...*

Friday tickets are £7 each (or £12 for two) with a glass of wine on arrival and light refreshments.

**Saturday 29th April**

Meet the rest of their guest line-up and discover these latest offerings:

<b>Ruth Dugdale</b>	9.30am
<i>The Things You Didn't See</i>	
<b>Lesley Kara</b>	10.45am
<i>The Apartment Upstairs</i>	
<b>Amen Alonge</b>	12 noon
<i>A Good Night to Kill</i>	
<b>Simon Mason</b>	2.15pm
<i>The Broken Afternoon</i>	
<b>Jane Casey</b>	3.30pm
<i>The Close</i>	
<b>William Shaw</b>	4.45pm
<i>Dead Rich</i>	

Saturday tickets are £5 per author, or £15 for the day.

**Book your place via:**

[suffolklibraries.co.uk/whats-on/festival/skulduggery-in-stowmarket](http://suffolklibraries.co.uk/whats-on/festival/skulduggery-in-stowmarket)

COMING UP IN MAY – BOOK NOW!

## Suffolk Walking Festival

Tickets have already gone on sale for this year's **Suffolk Walking Festival** – a 16-day programme offering over 70 delightful walks over 350 miles of Suffolk's landscape.

Running every day from Saturday 13th May to Sunday 28th May, there are going to be splendid walks for everyone to enjoy, heritage trails, and foraging walks including cream teas.

### Spectacular Suffolk walks

The festival kicks off at **Thornham Walks** on *Saturday 13th May* with refreshments and five possible launch jaunts.

As part of the Festival, you can walk with an archaeologist in the "*Valley of the Kings*" at the heart of an Anglo-Saxon Kingdom.

Or you can explore the 'Brecks', a unique landscape of gorse-covered sandy chalk soils, purple heathland, tall pines and rare wildlife.

And discover the hidden histories of *West Stow Country Park* and the *Island of Secrets* (mysterious Orford Ness).

You'll also enjoy spectacular riverside rambles, including a *River Orwell Ramble*, a *Martlesham Meander*, and *Waldringfield Wander* along the Deben.

And try some Japanese *Shinrin-yoku* (forest bathing) – or a starlit adventure on a woodland night exploration at Sutton Hoo.

There's a brand new 4 day *Challenge Walk* through five beautiful medieval Wool Towns in South Suffolk!



And back this year are the popular *Walk 'n' Water* river trips with a boat in Sudbury; a walk with *Sweep the sheepdog* on Orford Ness; a twilight safari in ancient woodland; and intriguing stories of smugglers and shipping routes on Dunwich Heath.

For more details, visit: [www.suffolkwalkingfestival.co.uk](http://www.suffolkwalkingfestival.co.uk) and buy your tickets early!

## RENDLESHAM REVEALED

# The Heart of a Kingdom

## Rendlesham Revealed: The Heart of a Kingdom AD 400-800

is a new exhibition now open at the *National Trust's Sutton Hoo*.

The exhibition takes visitors on a 400-year journey to reveal how the Anglo-Saxon royal settlement at Rendlesham grew and developed, and celebrates the many volunteers from the local community who uncovered the long-lost archaeological remains.

This story is brought to life with over 150 archaeological finds from the settlement, ranging from food remains to gold jewellery, many of which have never been on public display before, on loan from Colchester and Ipswich Museums and from Suffolk County Council's archaeological archives.

**Suffolk County Council's Archaeological Service** is curating the exhibition to celebrate "*Rendlesham Revealed*", a community archaeology project funded by *The National Lottery Heritage Fund*.

**Faye Minter**, *Archaeological Archives & Projects Manager*, at Suffolk County Council said: "South-east Suffolk was the power centre of the early East Anglian kingdom, and Rendlesham was the place from which it was ruled. Rendlesham's archaeology gives a unique insight into what a royal centre of international importance was like at that time.

"The exhibition showcases the results of fieldwork and research partnerships over the past 15 years. Work began in 2008, with the painstaking



survey by four responsible metal detector users that revealed the site, and is still continuing. Just six months ago our community archaeology project excavated the foundations of a royal timber hall...

"For me, the highlight of the exhibition is showing how we can build understanding from the range of objects

and different strands of evidence to tell the story of Rendlesham 1,400 years ago."

### Items on Display

Items on display include:

- Gold and garnet dress accessories and weaponry fittings, used by the highest levels of society, such as warriors and royalty.
- Gold, silver and copper-alloy coinage.



- Imported objects from across Europe suggests long-distance contacts, gift giving and trade.
- Objects representing the ordinary population of farmers and craftworkers, including belt buckles, pins and weaving items.
- Animal bone, rubbish from butchery, cooking and eating, which tells us about farming practices and feasting.

### Councillor Melanie Vigo di Gallidoro, Suffolk

County Council's *Deputy Cabinet Member for Protected Landscapes and Archaeology* said: "I'd like to thank the *National Trust* and *Suffolk Institute of Archaeology and History* for supporting this exhibition, as well as the many partners, landowners and farmers who have allowed access to their land, and *National Lottery* players, without whom, funding for this project would not have been made possible."

### The BIG Reveal

**The Exhibition opens at Sutton Hoo on 23rd March 2023 and will run until 29th October 2023.**

Entry to the temporary exhibition will be included in the normal admission charge to Sutton Hoo, which is free for National Trust members.



**Portable Antiquities Scheme**  
www.finds.org.uk



Made possible with  
**Heritage Fund**

For further details about *Rendlesham Revealed* go to:  
**heritage.suffolk.gov.uk/rendlesham**



# Down on the Farm

*It's all bunnies, lambs and piglets*



## A busy month — it's that time of year

It was a labour of love but we managed to fence the lower half of the forest in two and a half days. All possible thanks to the *Community Partnership funding* from East Suffolk Council.

The funding also paid for the new boardwalks in the forest, made by local carpenter *Cameron Beard*, so we can use the lower half of the forest without the risk of losing wellies in the bog!



We have new arrivals at the farm including our new Oxford Sandy & Black sow, Elsie. Elsie has just given birth to three wonderful and very playful piglets that will all be registered for breeding to maintain the breeding stock of this rare breed.

We also have baby bunnies and baby lambs, just in time for Easter.

The lambs will be coming to the *Rendlesham Show* in June so please come and visit our stand and say hello. We've got a couple more that are currently being bottle-fed that will be joining us as well.

We are now just waiting to see if Millie, our pigmy goat is going to produce – or whether she's just put on a bit of weight!



## Pitstop Nursery

Quality care for under 3's  
Funded 2 year olds welcome  
Dedicated baby area

[www.pitstop-oosc.co.uk](http://www.pitstop-oosc.co.uk)

*'Promoting  
Awe & Wonder  
In Early Years'*



## Deben Community Farm

Saddlemakers Lane  
Melton, IP12 1PP



@debencommunityfarm



## *But also a sad farewell to Trip*

### **A sad farewell to Trip**

We said goodbye to Trip, our billygoat this month.

Trip went to goat heaven at the grand old age of 10, but his legacy goes on with the numerous kids that he was dad to.

Often known as grumpy and bad tempered, he stole the hearts of many a visitor to the farm and will be missed.

### **Zero waste**

At the farm we try to reuse as much as we can. Muck and animal bedding is composted and reused in the polytunnels and veggie beds, hedge trimmings are stripped down to the branches which are used for signage posts, bean poles and of course, den building.

For the smaller branches, well, they make excellent pea

supports, nothing is wasted! In the forest we leave fallen trees to help create natural habitats for bugs and smaller creatures.

And did you know that you could use alpaca poo straight from the field to the veg plot? Apparently it's one of the best natural fertilisers, so we're looking forward to great veg production this year.

In the polytunnels we've expanded our vertical strawberry growing, watch this space.



Photos: Deben Community Farm



**Open every  
Sunday**

**12—4pm**

**FREE entry**

**Visit or Volunteer**

**Duke of Edinburgh  
placements**

## **Pitstop Forest Explorers**

For all 3 – 8 year olds

Pre-schoolers and home eds

Funded 3's welcome

Based at the Deben Community Farm

[www.pitstop-oosc.co.uk](http://www.pitstop-oosc.co.uk)

AND THE  
Adventure  
BEGINS





CLEARING THE PATH FOR A SMOOTHER SALE...  
IT'S WHAT WE DO.



**CORNERSTONE**  
RESIDENTIAL ESTATE AGENTS

CALL US TO SEE HOW WE CAN HELP YOU MOVE

**01394 547000**  
**www.cr-ea.co.uk**



**Snape Motor Company Ltd**

*"All Your Vehicle Needs"*



**Snape Car & Van Hire**

*"Keeping You on The Move"*

AIR CONDITIONING

DIAGNOSTICS

SERVICING

REPAIRS

MOT



Working Hours

**01728 688241**

**www.snapemotorcompany.co.uk**

*Manual and Automatic hatchback Cars available*

*Transit Custom SWB*

*Transit LWB*

*Box Van With Tail Lift*

*Visit our website of live availability and pricing*

**www.snapehire.co.uk**

**01728 633028**



# Rendlesham Radio

## *Growing pains and pleasures*



As Rendlesham Radio grows the more work and projects we get involved with. This month has been much the same with new presenters coming on board, and new projects and ideas to get underway along with keeping the existing work and broadcast to a high standard. So much so that we keep on hitting the top of the radio show charts on the global *Mixcloud* platform. To keep in the charts every week our great team of presenters are constantly refreshing their shows with competitions, quizzes, informed debate and all-time great music. Chart rankings fluctuate based on engagement (ie. how many favourites, shares, and listens to the shows generate). The number of people who hit the like button are fans who genuinely want to listen to our shows on demand.

### So much to review on [rendleshamradio.com](http://rendleshamradio.com)

The website is the main gateway to listen but it also has a lot more content about the show's local events and links to our partner contributors — such as *Alzheimers Society*, *Playlist for Life*, *Joinavision* and the very latest *Integrated Human with Tanya* who has a weekly show ("Tough Talk with Tanya") which is our first show designed to be a helpline for all manner of problems using somatic coaching and mentorship. Tanya talks through listener problems and helps them look for solutions. Questions can be asked to Tanya via the website or via FB (links to



her profile and her private group can be found on her Team page on the website.

Answers will be made anonymous so listen in.

This is what Christina said after meeting with Tanya.

"Tanya helped me with a problem — I had a decision I needed to make. It was creating stress, fear and anxiety for me. Tanya used breathwork and enabled me to connect to my feelings in that moment. This process allowed me to let go of my blocks and finally take the action I needed. She helped me move forward with confidence. I highly recommend Tanya for her, honesty and expertise in breathwork and trauma. She brings a welcoming sense of humour and a sense of tough love to her work. Rest assured that Tanya has your back!"

You can listen to "Tough Talk with Tanya" on Sundays at 2pm. Or on demand at any time on the website.

### Open Mic at the Tavern

We're looking forward to our next open mic night at the Tavern on the last Tuesday of the month.

We will be recording the best of the talented performers on the night and putting it all together on "The Postman and

Him" show. We will also be drawing our big money monthly *100 Club* draw. There's still time to join — details are on the website.

### Tea & Tech

Victoria and Malcolm held a *Tea & Tech* session in Woodbridge this month with our partner *Communities Together*. These sessions are proving to be useful in many ways. Initially they're to help people find their way around the world of digital access with their phones and tablets. But we believe it also gives people a reason to get out and have a well-needed chat — which seems to be essential for our mental well-being. Look out for the next monthly session.

### Studio update

Our studio in Jubilee Park had a major equipment update thanks to our main contributor and founder Mark Isbister and his company *Team Audio* and Glenn Knights. Racks of equipment were brought in (including new mixing desk microphones and new software). This was to be a straightforward installation for Mark, who has installed huge communication systems

all around the world. But... an aggressive virus found its way into the system and burnt out two computers before it was controlled and quarantined. Everything was restored without any break in our transmissions.

### Events to come

We are planning to be part of many events coming up in the spring and summer, starting with the *Easter Egg Hunt on April 6th* in Jubilee Park. Look out for us and say hello, we will have some of the books we are featuring on our new *Rendy Readers* show for sale. Yes, another new show to celebrate the arts and cultural movement in Suffolk. We ask local authors to talk about their latest work and put their hard-copy books and audiobooks up for sale. This developed from *Sophia Michaels' Poets Platform* show on Sunday afternoons or available on demand.

### Volunteers

You can imagine how much our volunteers enjoy putting together shows and building Rendlesham Radio's positive impact on our local community. We would love you to be a part of this exciting project. You may want to present a show or help with the administration of all aspects of running a community radio station.

Just contact us through the website to arrange a visit to the studio and have a chat.





# Diary Dates

## Events in April

Mon	3	RPC Planning Committee, Room 16, Community Centre, 7.30pm	Sun	16	Litter Pick Sunday, 10-2pm, Village Square incl. <i>Sowing the Seeds of Love</i> , Community Centre
Tues	4	Deadline for Submitting Nominations for Parish Council Election	Tues	18	Senior Youth Group, 6.45pm-9.15pm
Thurs	6	Community Egg Hunt & Local Craft Market from 12-4pm at Jubilee Park Bingo at Rendlesham Social Club, 7.45pm	Weds	19	Junior Youth Group, 6.30pm-8pm
Fri	7	FREE Pool Friday at Rendlesham Social Club	Thurs	20	Senior Youth Group, 6.45pm-9.15pm RPC Finance & Asset Committee, Room 16, Community Centre, 7.30pm Bingo at Rendlesham Social Club, 7.45pm
Thurs	13	Over 60s Group, 10-12.30pm RPC Jubilee Park Committee, Room 16, Community Centre, 7.30pm Bingo at Rendlesham Social Club, 7.45pm	Tues	25	Senior Youth Group, 6.45pm-9.15pm
			Weds	26	Junior Youth Group, 6.30pm-8pm
			Thurs	27	Over 60s Group, 10-12.30pm Senior Youth Group, 6.45pm-9.15pm Bingo at Rendlesham Social Club, 7.45pm

## What's on in April?

**BINGO Every Thursday from 7.30pm**

### OPENING HOURS

Thurs 7-10.30pm, Fri 7-11pm,  
Sat 7-11pm and Sun 1-5pm

- Fri 7th Good Friday
- Sat 8th Kids Easter Party with AbraCaDavid, 5-7pm  
Cookies Karaoke, 8pm
- Sun 9th Easter Sunday – Alleycats, 2-5pm
- Mon 10th Easter Monday
- Fri 14th AGM from 8pm (sorry, no kids!)
- Sat 22nd Julie Oliver's 50th Birthday Party (with JDS playing)

 **RENDLESHAM SOCIAL CLUB**

**Rendlesham Social Club**

Community Centre, Walnut Tree Avenue



### DON'T MISS NEWS ABOUT RENDLESHAM

**Sign up to E-NEWS now!**

Just send an e-mail to: [admin@rendleshampc.org.uk](mailto:admin@rendleshampc.org.uk)  
and put E-NEWS in the subject box

### DON'T MISS NEWS ABOUT RENDLESHAM

**Join us on FACEBOOK at**

 **RendleshamParishCouncil** and  
 **TheRendleshamShow**

# Useful Information



## Wickham Market Medical Centre

Tel: 01728 747101

## Rendlesham Surgery opening hours

Monday	15.30 - 18.00
Tuesday	08.30 - 12.00
Wednesday	15.30 - 18.00
Thursday	08.30 - 12.00
Friday	14.30 - 17.30

## Acer Road Pharmacy opening hours

Tel: 01394 460548

Monday	08.30 - 18.00
Tuesday	08.30 - 17.30
Wednesday	08.30 - 18.00
Thursday	08.30 - 17.30
Friday	08.30 - 17.30

## Rendlesham & District Over 60's

### April Meetings:

Thursday 13th &  
Thursday 27th April  
10.30-12.30

## Sudoku Challenge answer

8	9	2	1	5	6	7	3	4
5	3	7	4	2	9	1	6	8
4	6	1	7	8	3	2	5	9
7	8	4	9	6	1	3	2	5
1	2	9	8	3	5	6	4	7
6	5	3	2	4	7	9	8	1
2	7	8	3	1	4	5	9	6
9	4	5	6	7	2	8	1	3
3	1	6	5	9	8	4	7	2



## Post Office, Costcutters opening hours

Monday/Friday 9am-5.30pm  
Saturday 9am-12.30pm  
Sunday Closed



## The Roman Catholic Parish of Woodbridge and Framlingham

**Parish Priest:**  
Fr Edmund Eggleston

### Churches:

St Thomas of Canterbury, Woodbridge

St Clare's, Framlingham

Mass times & contact details:  
[www.wfrcp.org.uk](http://www.wfrcp.org.uk)

## Faith Baptist Church

Bromeswell, Woodbridge  
Sunday mornings, 11am  
**Rev Frank Thompson**  
01394 420181



## Citizens Advice East Suffolk

Open for advice by email, phone or post on Mon, Tues, Thurs and Fri from 10-2pm.

Call 01728 832193 or  
Freephone 0808 278 7868 or  
email [supervisor@leistoncab.cabnet.org.uk](mailto:supervisor@leistoncab.cabnet.org.uk)

Face-to-face appointments can be pre-booked on 01728 642960 between 10am-4pm, Mon-Fri.

## Rendlesham Directory

Wickham Market Medical Centre & Rendlesham Surgery	01728 747101
Acer Road Pharmacy 6 Acer Road, IP12 2GA	01394 460548
<i>District Councillor</i> Cllr Ray Herring	01728 746337 07885 249218
<i>County Councillor</i> Cllr Alexander Nicoll	07922 586303
Gas Emergency	0800 111 999
Woodbridge Safer Neighbourhood Team	01473 613500
Rendlesham Primary School Head: Debbie Thomas	01394 462190
Eyke CEVC Primary School Head: Lucy Fairweather	01394 460328
Rendlesham Parish Church Rev. Mandy Reynolds	01394 420129
Farlingaye High School Head: Dr Sievwright	01394 385720
Woodbridge Library	01394 446510
Parish Council Heather Heelis, Parish Clerk	01394 420207
Police (non-emergency)	101
Rendlesham Dental Practice	01394 421500
Rendlesham Day Nursery	01394 420581 07917 854086
Rendlesham Good Neighbour Scheme	07486 551004
Ryder-Davies & Partners Vets	01394 420964
Post Office (Costcutter)	01394 461221
Grace Church Rendlesham Pastor Dave Rushbrook	01394 809691
Kesgrave Children's Centre	01473 265833
Rendlesham Community Centre Make your bookings via: <a href="mailto:admin@rendleshampc.org.uk">admin@rendleshampc.org.uk</a>	01394 420207
Rendlesham Care Home	01394 461630
Maharishi Peace Palace	01394 421136
Over 60s Club: Linda Barber	01394 461094





## Extensive Home Improvement Display Area

9 conservatories, 2 garden offices, upvc and aluminium windows and doors



Garden Offices



Insulated Roofs



Conservatories



Windows



Doors



Bi-Folds



Sliders



Special Projects

## Home improvement specialists

[www.colourchangeupvc.co.uk](http://www.colourchangeupvc.co.uk)  
01394 420774

Base Business Park  
Rendlesham IP12 2TW

